



---

**ZERA**

**ESCBx00-ESVBx00**  
**Product Catalogue**

Doc.No: 100352723  
Version from: 01.07.2022

---

---

## Device



### ESCB200 Electronic Compensated Standard Current Burden

The programmable electronic compensated standard current burden ESCB can be used as load for manual, semiautomatic and automatic tests of current instrument transformers. The ESCB is characterized particularly by the user-friendly menu guidance using function keys and 5,9" LCD display.

Ord.No. **101317801**



### ESVB200 Electronic Compensated Standard Voltage Burden

The programmable electronic compensated standard voltage burden ESVB can be used as load for manual, semiautomatic and automatic tests of voltage instrument transformers. The ESVB is characterized particularly by the user-friendly menu guidance using function keys and 5,9" LCD display.

Ord.No. **101316301**



### ESCB100 Electronic Compensated Standard Current Burden

The burdens ESCB100 is used for manual testing of instrument transformers acc. to IEC or ANSI/IEEE at fixed 3 secondary current ranges 1 A, 2 A and 5 A with **fixed burden steps at 50 Hz or 60 Hz** as load. Please see the datasheet for more information.

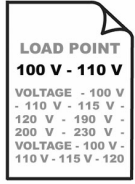
Ord.No. **101317701**



### ESVB100 Electronic Compensated Standard Voltage Burden

The burdens ESVB100 is used for manual testing of instrument transformers acc. to IEC or ANSI/IEEE at 6 fixed secondary voltage ranges (to be defined) with **fixed burden steps at 50 Hz or 60 Hz** as load. Please see the datasheet for more information.

Ord.No. **101316001**



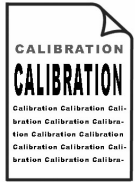
### Secondary Voltage Range

A total of 6 voltage ranges can be selected.  
**00**=100 V, **01**=110 V, **02**=115 V, **03**=120 V, **04**=190 V,  
**05**=200 V, **07**=100/3 V, **08**=110/3 V, **09**=1115/3 V,  
**10**=120/3 V, **11**=190/3 V, **12**=200/3 V, **14**=100/√3 V,  
**15**=110/√3 V, **16**=115/√3 V, **17**=120/√3 V, **18**=190/√3 V,  
**19**=200/√3 V, **50**=100 V, 110 V, 100/√3 V, 110/√3 V,  
100/√3 V, 115 V, 120 V, **51**=100 V, 100/√3 V, 110 V,  
110/√3 V, 120 V, 120/√3 V,

Ord.No. **1013166xx**

xx please select the voltage range

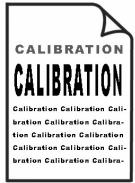
## Factory Calibration for New Instrument



### Factory Calibration for NEW ESCB200, 50Hz/60Hz/ANSI incl. ZERA calibration report.

Ord.No. **100007080**

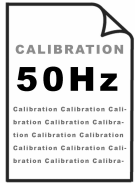
This article applies only for a purchase of new device.



### Factory Calibration for NEW ESVB200, 50Hz/60Hz/ANSI incl. ZERA calibration report.

Ord.No. **100007081**

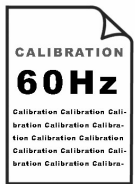
This article applies only for a purchase of new device.



### Factory Calibration for NEW ESCB100, 50 Hz incl. ZERA calibration report

Ord.No. **101242314**

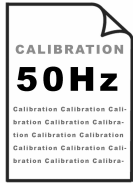
This article applies only for a purchase of new device.



### Factory Calibration for NEW ESCB100, 60 Hz incl. ZERA calibration report

Ord.No. **101242315**

This article applies only for a purchase of new device.



**Factory Calibration for NEW ESVB100, 50 Hz**  
incl. ZERA calibration report

Ord.No. **101242310**

This article applies only for a purchase of new device.



**Factory Calibration for NEW ESVB100, 60 Hz**  
incl. ZERA calibration report

Ord.No. **101242311**

This article applies only for a purchase of new device.

**DAkKS DKD-Calibration for Instrument**



**DAkKS Calibration for ESCB200, 50 Hz**  
incl. DKD Calibration Certificate

Ord.No. **100006880**

**Load points according to ZERA regulations.**  
Summary of used load points  
can be downloaded at [www.zera.de](http://www.zera.de).

Additional load points are subject to charges.



**DAkKS Calibration for ESCB200, 60Hz**  
incl. DKD Calibration Certificate

Ord.No. **100006889**

**Load points according to ZERA regulations.**  
Summary of used load points  
can be downloaded at [www.zera.de](http://www.zera.de).

Additional load points are subject to charges.



**DAkKS Calibration for ESVB200, 50 Hz**  
incl. DKD Calibration Certificate

Ord.No. **100006881**

**Load points according to ZERA regulations.**  
Summary of used load points  
can be downloaded at [www.zera.de](http://www.zera.de).

Additional load points are subject to charges.

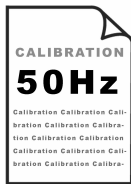


**DAkKS Calibration for ESVB200, 60Hz**  
incl. DKD Calibration Certificate

Ord.No. **100006890**

**Load points according to ZERA regulations.**  
Summary of used load points  
can be downloaded at [www.zera.de](http://www.zera.de).

Additional load points are subject to charges.



**DAkKS Calibration for ESCB100, 50 Hz**  
incl. DKD calibration Certificate

Ord.No. **101173925**

**Load points according to ZERA regulations.**  
Summary of used load points  
can be downloaded at [www.zera.de](http://www.zera.de).

Additional load points are subject to charges.

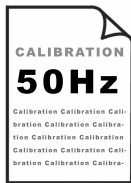


**DAkKS Calibration for ESCB100, 60 Hz**  
incl. DKD calibration Certificate

Ord.No. **101173926**

**Load points according to ZERA regulations.**  
Summary of used load points  
can be downloaded at [www.zera.de](http://www.zera.de).

Additional load points are subject to charges.



**DAkKS Calibration for ESVB100, 50 Hz**  
incl. DKD calibration Certificate

Ord.No. **101173923**

**Load points according to ZERA regulations.**  
Summary of used load points  
can be downloaded at [www.zera.de](http://www.zera.de).

Additional load points are subject to charges.



**DAkKS Calibration for ESVB100, 60 Hz**  
incl. DKD calibration Certificate

Ord.No. **101173924**

**Load points according to ZERA regulations.**  
Summary of used load points  
can be downloaded at [www.zera.de](http://www.zera.de).

Additional load points are subject to charges.

## Power Cords



**Power cord "Class I grounded plug type E/F to IEC 60320 C13", 2.5 m**

Ord.No. **M00481004**

For supply via power socket.

- 1x class I grounded plug type E/F (CEE 7/7)
- 1x socket IEC 60320 C13, angled



**Power cord "Plug type B to IEC 60320 C13", 2.5 m**

Ord.No. **X00006459**

For supply via power socket.

- 1x plug type B
- 1x socket IEC 60320 C13



**Power cord "Plug type I to IEC 60320 C13", 2.5 m**

Ord.No. **X00006460**

For supply via power socket.

- 1x plug type I (AS/NZS 3112, 3-pin)
- 1x socket IEC 60320 C13



**Power cord "Plug type G (BS 1363) to IEC 60320 C13", 2.5 m**

Ord.No. **X00009832**

For supply via power socket.

- 1x Plug type G (BS 1363)
- 1x socket IEC 60320 C13

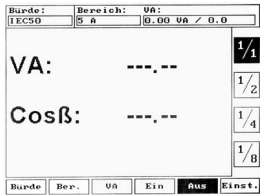


**Power cord "Plug type H"  
to IEC 60320 C13", 1.8 m**  
For supply via power socket.

- 1x Plug type H
- 1x socket IEC 60320 C13

Ord.No. **100929903**

## Software



**Software option for integrate additional nominal  
voltages**  
for testing of VT  
**230/3 V - 230/ $\sqrt{3}$  V - 230 V**

Ord.No. **100078820**

## Standard Accessories (see also Special Accessories)

**Set - Fuse 1,6 A / time-lag Type**  
10 pcs.

Ord.No. **101393500**



**Set - Fuse 3,15 A /semi time-lag Type**  
10 pcs.

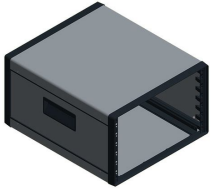
Ord.No. **101393600**



**High voltage protection box HVP100**  
Please see datasheet HVP100\_MAN\_EXT\_EN\_V100.pdf  
for more information.

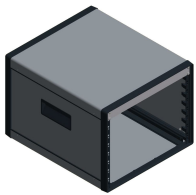
Ord.No. **101304900**





**Desktop case for ESVB100/200**  
Desktop case for ESVB100 or ESVB200, rear side open

Ord.No. **101435500**



**Desktop case for ESCB100/200**  
Desktop case for ESCB100 or ESCB200, rear side open

Ord.No. **101435600**

## Documentation



**Complete documentation as pdf files on USB Stick**

Ord.No. **100090716**

## Readjustment (only for Service)



**Adjustment of ESCB200**

*Note:* Calibration and Calibration report are not included.

Ord.No. **100033880**



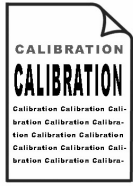
**Adjustment of ESVB200**

*Note:* Calibration and Calibration report are not included.

Ord.No. **100033881**



**Factory Calibration (only for Service)**

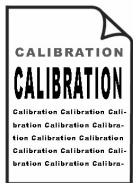


**Factory Recalibration for ESCB200,  
50 Hz / 60 Hz / ANSI**  
incl. ZERA calibration report.

Ord.No. **100890825**

**Load points according to ZERA regulations.**  
Summary of used load points  
can be downloaded at [www.zera.de](http://www.zera.de).

Additional load points are subject to charges.

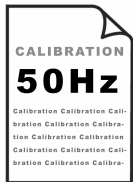


**Factory Recalibration for ESVB200,  
50 Hz / 60 Hz / ANSI**  
incl. ZERA calibration report.

Ord.No. **100890826**

**Load points according to ZERA regulations.**  
Summary of used load points  
can be downloaded at [www.zera.de](http://www.zera.de).

Additional load points are subject to charges.



**Factory Recalibration for ESCB100, 50 Hz**  
incl. ZERA calibration report

Ord.No. **101242316**

**Load points according to ZERA regulations.**  
Summary of used load points  
can be downloaded at [www.zera.de](http://www.zera.de).

Additional load points are subject to charges.



**Factory Recalibration for ESCB100, 60 Hz**  
incl. ZERA calibration report

Ord.No. **101242317**

**Load points according to ZERA regulations.**  
Summary of used load points  
can be downloaded at [www.zera.de](http://www.zera.de).

Additional load points are subject to charges.



**Factory Recalibration for ESVB100, 50 Hz**  
incl. ZERA calibration report

Ord.No. **101242312**

**Load points according to ZERA regulations.**  
Summary of used load points  
can be downloaded at [www.zera.de](http://www.zera.de).

Additional load points are subject to charges.



**Factory Recalibration for ESVB100, 60 Hz**  
incl. ZERA calibration report

Ord.No. **101242313**

**Load points according to ZERA regulations.**  
Summary of used load points  
can be downloaded at [www.zera.de](http://www.zera.de).

Additional load points are subject to charges.

---

ZERA GmbH  
Humboldtstrasse 2a  
D-53639 Koenigswinter  
Phone: +49 (0)2244 9277-0  
E-Mail: [zera@zera.de](mailto:zera@zera.de)  
Internet: [www.zera.de](http://www.zera.de)  
Managing Director: Horst Wächter  
Headquarter: Königswinter

---

Commerzbank Bonn  
IBAN: DE29 3804 0007 0113 3131 00  
SWIFT (BIC): COBADEFF380

Kreissparkasse Köln  
IBAN: DE15 3705 0299 0001 0784 92  
SWIFT (BIC): COKSDE33

HRB 7073 Siegburg  
VAT-IdNo. DE 218 515 479  
WEEE-Reg.Nr. DE 53879641

---

## Notes on using the product catalogue

When ordering, always state the order number.

Pictures can differ from original product.

We follow ZVEI terms of delivery, see on [www.zera.de](http://www.zera.de)